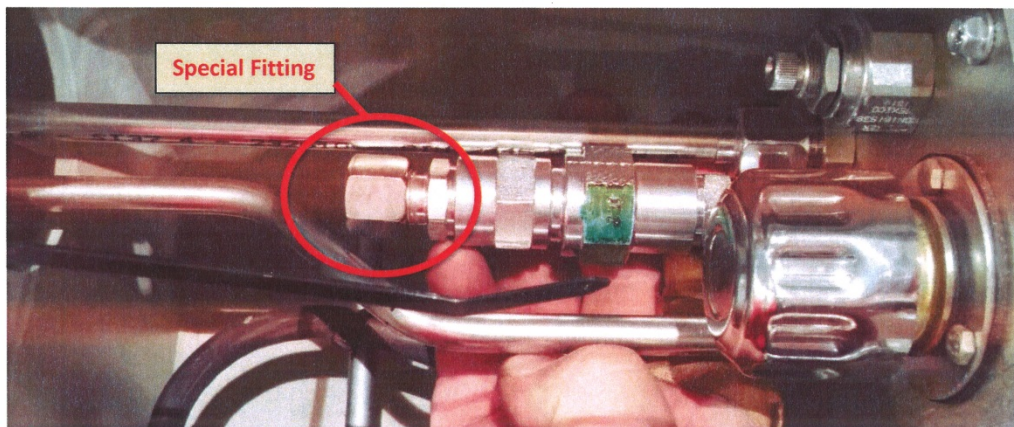


INSTALLATION PROCEDURE:

How to install additional non-return valve on N2 door.

Please follow all the following steps in order to install additional non-return valve correctly and to avoid potentially damage of the special fitting.

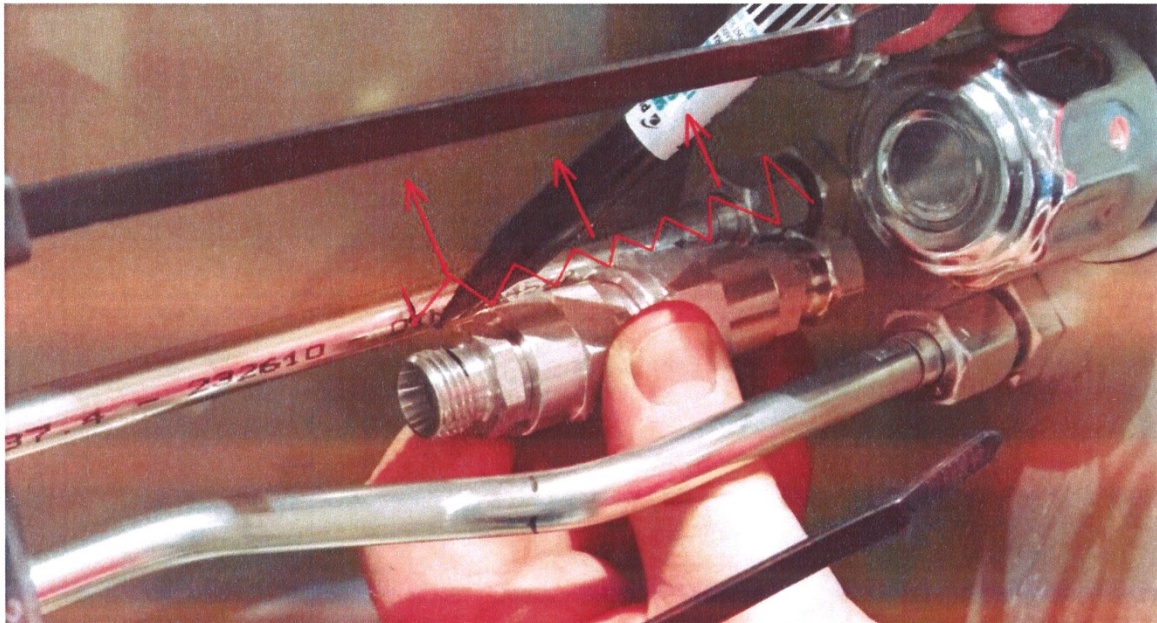
1. Place the complete fitting beside of the pipe.



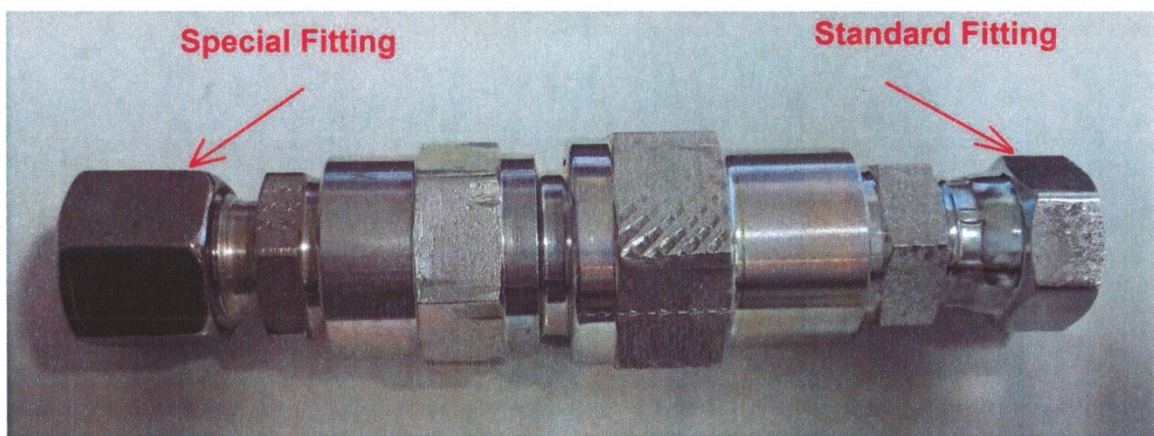
2. Remove the cap/nut and mark the pipe exactly like it's shown on the photo below:



3. Cut the pipe and thoroughly clean the edges.
4. Unscrew and remove the rest of the tube where it will be installed the new valve.



5. Right fitting mount/tight as usual (Standard Fitting)

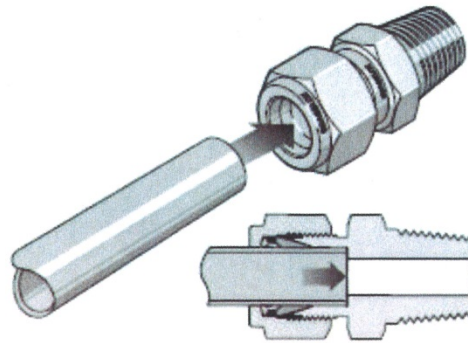


6. Please carefully read below explanation regarding tightening procedure for the left/special fitting.

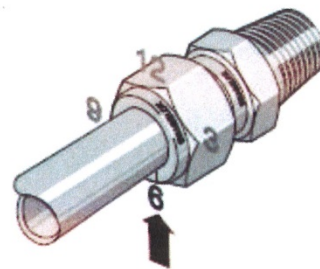
Fully insert the tube into the fitting and against the shoulder; rotate the nut finger-tight

High-pressure applications and high safety- factor systems:

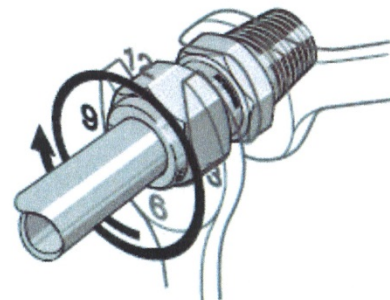
Further tighten the nut until the tube will not turn by hand or move axially in the fitting.



Mark the nut at the 6 o'clock position.



While holding the fitting body steady, tighten the nut one and one-quarter turns to the 9 o'clock position .



7. In the case that you need to unscrew it again

If for some reason you need to unscrew the cap/nut again, first please mark starting position by marker.

Then you have to be sure that after re-tightening by fingers is enough to turn **only one-quarter** this time. Be careful not more than this or otherwise the seal/fitting will be permanently damaged.