

Issue date:	Place:	Page:	Ident.
05.07.2018	Akland, Norway	1 of 3	TB2018-04

This document applies to:		Internal use:	External use:	X
Applies to:		Bulletin subject:		
WTD	X	G1 Solenoid Valve Block on N2 doors HYDRAULIC DOORS N2 (ONLY FOR RIGHT DIRECTION DOORS)		
SAFETY WINDOWS				
AUTOMATION				
Created by:		VML		
Approved by:		ROS / MAA		

G1 SOLENOID VALVE BLOCK FOR N2 WT DOORS

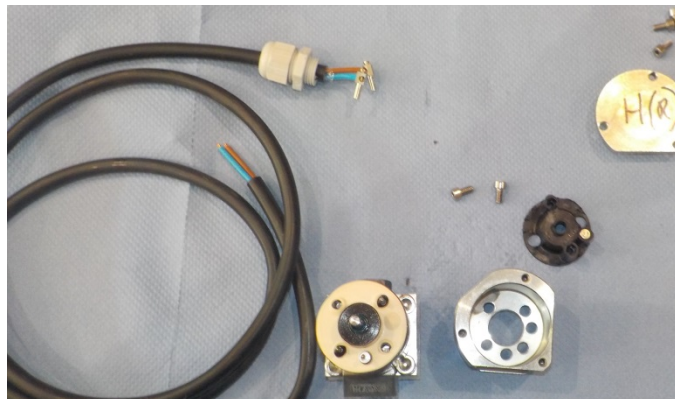
THIS INSTRUCTION ONLY APPLIES FOR RIGHT DIRECTION DOOR.

FOR LEFT DOOR, THERE IS NO NEED TO MAKE ANY CHANGES/UPGRADES.

You need a complete G3-1 Solenoid Valve.

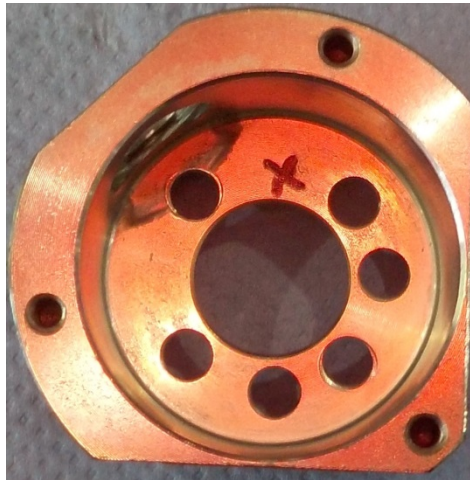


The first step is to disassemble the top of the solenoid valve.

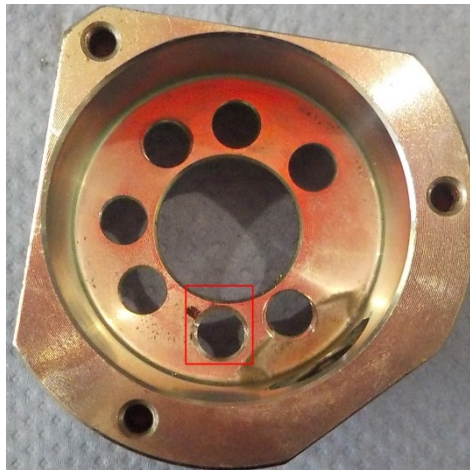


Issue date:	Place:	Page:	Ident.
05.07.2018	Akland, Norway	2 of 3	TB2018-04

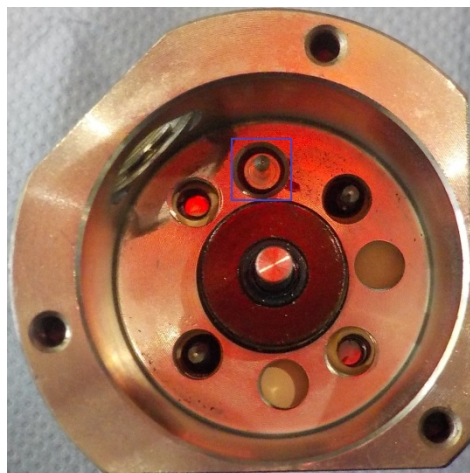
Then mark the place for drilling a hole, as shown on the photo.



After drilling, the hole should look like this.



Then place the top of the solenoid back on the solenoid base, as shown on the photo.

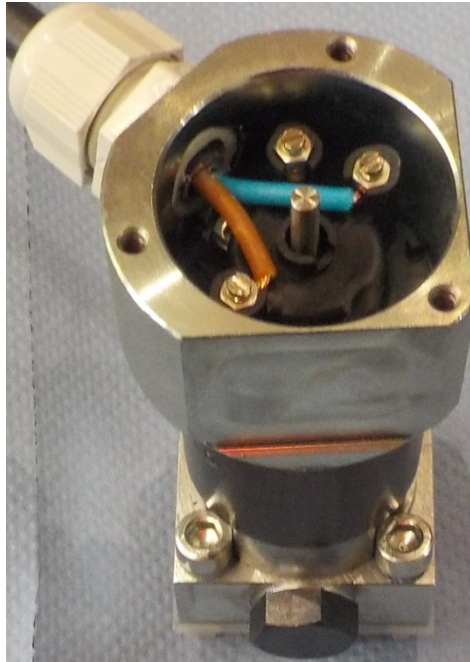


Issue date:	Place:	Page:	Ident.
05.07.2018	Akland, Norway	3 of 3	TB2018-04

Place the plastic part back into the housing.



Install the cable back and connect the two wires, as shown on the photo.



At the end mount the solenoid valve on the hydraulic valve block (Operation Bracket).

