

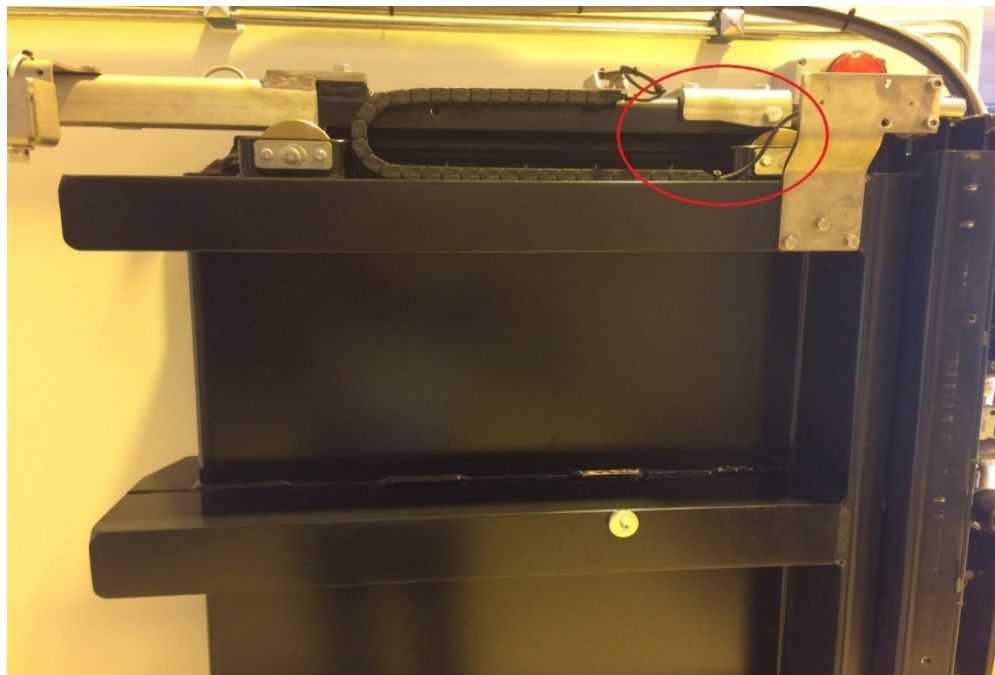
Date:	No:	Page:
21.08.2018	TB2018-03	1 of 2

Applies to:		Bulletin subject:
WTD	X	FMA WHEEL SUPPORT KIT
SAFETY WINDOWS		
AUTOMATION		
Created by:		GDA / VML
Approved by:		OOR

Introduction:

To inform users of IMS Watertight FMA(Flush sill, Machinery Door, Adjustable Height) doors about an available upgrade, reducing the risk of door derailing during closing and opening sequence.

In previous design, the FMA door can potentially derail during closing/opening sequence if water is applied against the door blade. IMS has developed a product improvement in way of a anti-derail bracket that can be mounted on the top rail in order to prevent this to happen.



Door with new bracket installed

Benefits:

Reduce possibility for door to get jammed or derail during opening and closing sequence.

Date:	No:	Page:
21.08.2018	TB2018-03	2 of 2

Implementation details:

Each Kit includes:

- 6 different sizes of the support and M10 x 20 bolts and M10 washers

Tools needed:

- Drill and drill-bits for making 3 x M10 holes with M10 treads for the bracket. Two holes on the top and one on the side.

Use of IMS Personnel:

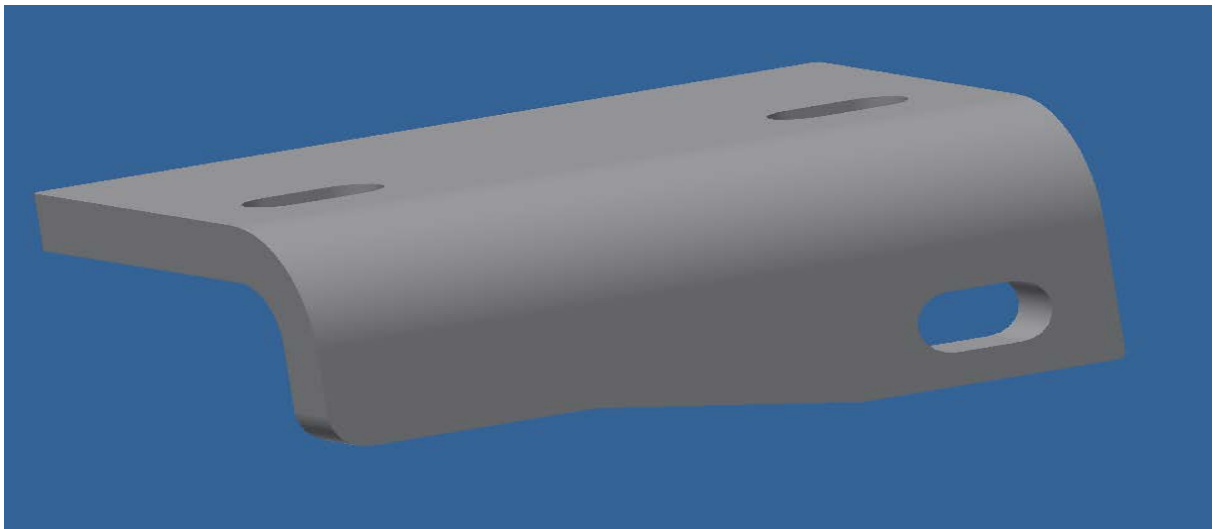
- Is required
- Is recommended
- Can assist
- Assistance not applicable

FMA WHEEL SUPPORT KIT

Part number

10035301 FMA WHEEL SUPPORT KIT LEFT

10035302 FMA WHEEL SUPPORT KIT RIGHT



Picture shows a FMA Wheel Support for Left opening door

Please contact: spareparts@imstec.no for further information.